

HIGHLIGHTS



AMBISONICS ESCAPE

Sit back, relax, and escape to the center of your favorite environment. HARMAN Ambisonics Escape™ technology recreates the 360-degree sound field of your personal sanctuary.



DYNAMIC SOUND STAGE

With HARMAN Dynamic Sound Stage the in-car soundtrack always knows where the car is heading. Similar to adaptive head lights, the focus of the music will adjust to the steering movement and rate of acceleration.



HI-RES AUDIO

Never miss a musical detail again. With Hi-Res Audio even the finest textures and most delicate details can be reproduced.



VIRTUAL VENUES

With Virtual Venues technology, HARMAN can take you on a musical tour of the world. Using a hi-res streaming track and placing it in the acoustic realm of a studio, the stages of your favorite jazz club or opera house allow you to feel as if being there.



www.HARMAN.com/lifestyle-audio

WWW.HARMAN.COM

HARMAN © 2017 HARMAN INTERNATIONAL INDUSTRIES, INCORPORATED. All rights reserved. Features, specifications and appearance are subject to change without notice. All other company and product names used herein may be trademarks of their respective owners.



Scalable
Audio
Solutions



THE PINNACLE OF AUDIO PERFECTION

A FEAST FOR THE SENSES

In life, it is often the details and the little luxuries that turn a moment into something special. HARMAN SUMMIT Next elevates in-car experiences beyond just audio, with sound you can feel and unique design integration capabilities. The vast amount of personalization, connectivity and adaptability tools extend from the finest materials, bespoke design and lighting schemes to unlimited combinations of speaker types and installation options. HARMAN puts the keys at your fingertips to make the future of traveling exceptional from the very first moment. SUMMIT Next's revolutionary System-On-Chip (SOC) strategy minimizes part complexity, opens up new perspectives for interior design and facilitates updates and upgrades throughout the life of the vehicle. With the integration of multiple small speaker arrays and ambisonic surround sound technique, the system creates a complete sound field for spatial compositions that take even the quietest notes and darkest tones into account. With its new expandable hardware and software concept, SUMMIT Next significantly contributes to an automotive experience far beyond just audio and allows drivers and passengers alike to travel just the way they want.

CONNECTED BY HARMAN – REIMAGINATING TIME

Time is our most precious asset. Making the most of every moment we have is crucial, whether we use it working or relaxing. As we spend more and more time in our cars, the demand for convenience, personalization and entertainment is growing. And with the rise of self-driving cars, it is about time to turn your car into an acoustic sanctuary, a refuge. HARMAN SUMMIT Next innovates tomorrow's driving experience. With multiple source processing, individual sound reproduction for every seat and smart connectivity, car occupants are given all options, no matter if they are traveling for business or pleasure. Now, they can enjoy the privacy to make undisturbed calls, answer e-mails or join an important virtual meeting. SUMMIT Next offers software and connected services tailored wholly to their individual wishes and with the opportunity to act completely out of the earshot of other passengers. Experience a new way of traveling and reimagine the time spent in car.

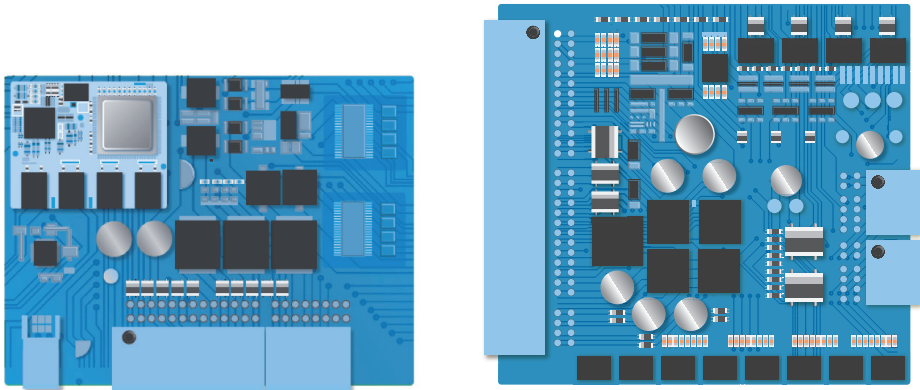
RE-THINKING THE TRADITIONAL

Traditional audio offerings have to be fixed 2-3 years before the actual start of production (SOP), setting tight framework conditions at a very early stage. HARMAN SUMMIT Next leverages a System-On-Chip (SOC) technology, as well as a variety of connectivity protocols, which allow this smart audio platform to stay current far beyond the assembly line roll-off. It has the processing horsepower to offer HARMAN's latest car audio technologies and highest level of performance in a variety of form factors to meet OEM (Original Equipment Manufacturer) packaging needs and adding a large degree of flexibility to the layout and number of speakers used.

HOW IT WORKS

The centerpiece of HARMAN SUMMIT Next is a small yet even more powerful chipset that incorporates a scalable system architecture getting the best out of the most advanced hardware components. By separating the processing unit from the amplifier, hardware dependency becomes a thing of the past. Simultaneously, this approach allows for larger multi-channel system processing, higher computing performance, wider integration options, less energy consumption and much more. Eventually, it is the 'more' that really makes the SUMMIT Next Smart Audio platform unique.

The groundbreaking SOC approach combined with key ingredient technologies such as A2B, EVAB, EMOST, MOST and Wi-Fi opens up a huge potential for future audio signal processing excellence. By integrating full-sphere surround sound techniques and 192k hi-res audio playback, SUMMIT Next creates acoustic enjoyment without the need for artificial touch ups.

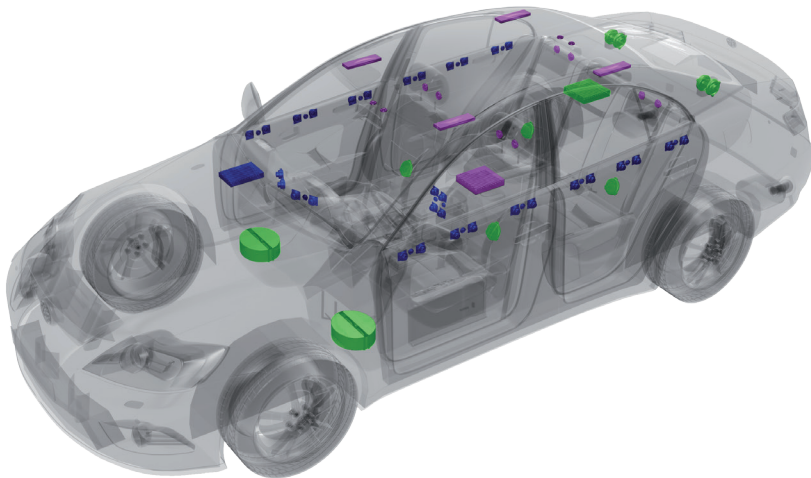


Simplified depiction of the System-On-Chip board with its integrated LGA module

Exemplary illustration of an expandable power stages' circuit board

SCALABLE PERSUASION

HARMAN SUMMIT Next is targeted at automotive manufacturers who sell cars in the mid through luxury segment and who want superior audio performance in an adaptable building-block structure. SUMMIT Next can provide luxury and ultra-luxury in-car experiences that can include 60+ individual channels of amplification and equalization, while delivering various surround sound solutions based upon HARMAN's powerful and proprietary DSP (Digital Signal Processing) capabilities. The cutting-edge expandable features include, but are not limited to: Ambisonics Escape, Dynamic Sound Stage, Hi-Res Audio, In-Car Conferencing and In-Car Theater. While HARMAN Ambisonics Escape™ recreates a 360-degree sound field of the passenger's personal sanctuary, HARMAN Dynamic Sound Stage creates an acoustic connection between the road and the goosebumps that an incredible drive can bring.



SCALABILITY EXAMPLE

- 12-Channel SOC Processor & 12-Channel Power Stage
 - 14 x Speaker Arrays comprising:
 - 2 x 40 mm Mid-Range Speakers & 1 x 25 mm Tweeter each
 - 2 x Rear Center-Channel Speaker Arrays
- 10-Channel Power Stage
 - 2 x Quad-Core Woofer Assemblies
 - 4 x In-Seat Tactile Transducers
 - 4 x 170 mm Woofers
- 10-Channel Power Stage
 - 8 x 40 mm Headrest Speakers
 - 4 x Electrodynamic Planar Loudspeakers (EDPLs)
 - 4 x 40 mm Headliner Speakers (front and rear)

KEY CONSUMER BENEFITS

- Access to the latest software features via digital storefront
- Upgradability of an audio system throughout the life of the vehicle via Over-the-Air (OTA) updates
- Cutting-edge experiences
- Highest acoustic performance offered in the market
- Personalized control with companion apps

KEY OEM BENEFITS

- Access to the latest technology offering during the lifecycle of the vehicle
- Easy upgradability to offer tech upgrades at year and mid-cycle events
- OEM-personalized technology differentiator and revenue generator via OEM-store and companion apps
- Scalable & expandable modular hardware platform which is easy to pack and adapt
- Quality assurance via OTA updates, telemetry & diagnostics

FEATURED TECHNOLOGIES

